

*** Publisher's Note ***:

If your email program is not displaying the chart graphs properly, please click on the following link which will take you to a web page that contains the graphs:

[Show charts](#)

Facts and Trends™



Published Nov. 2009

Location : Seabeck/Holly (145)

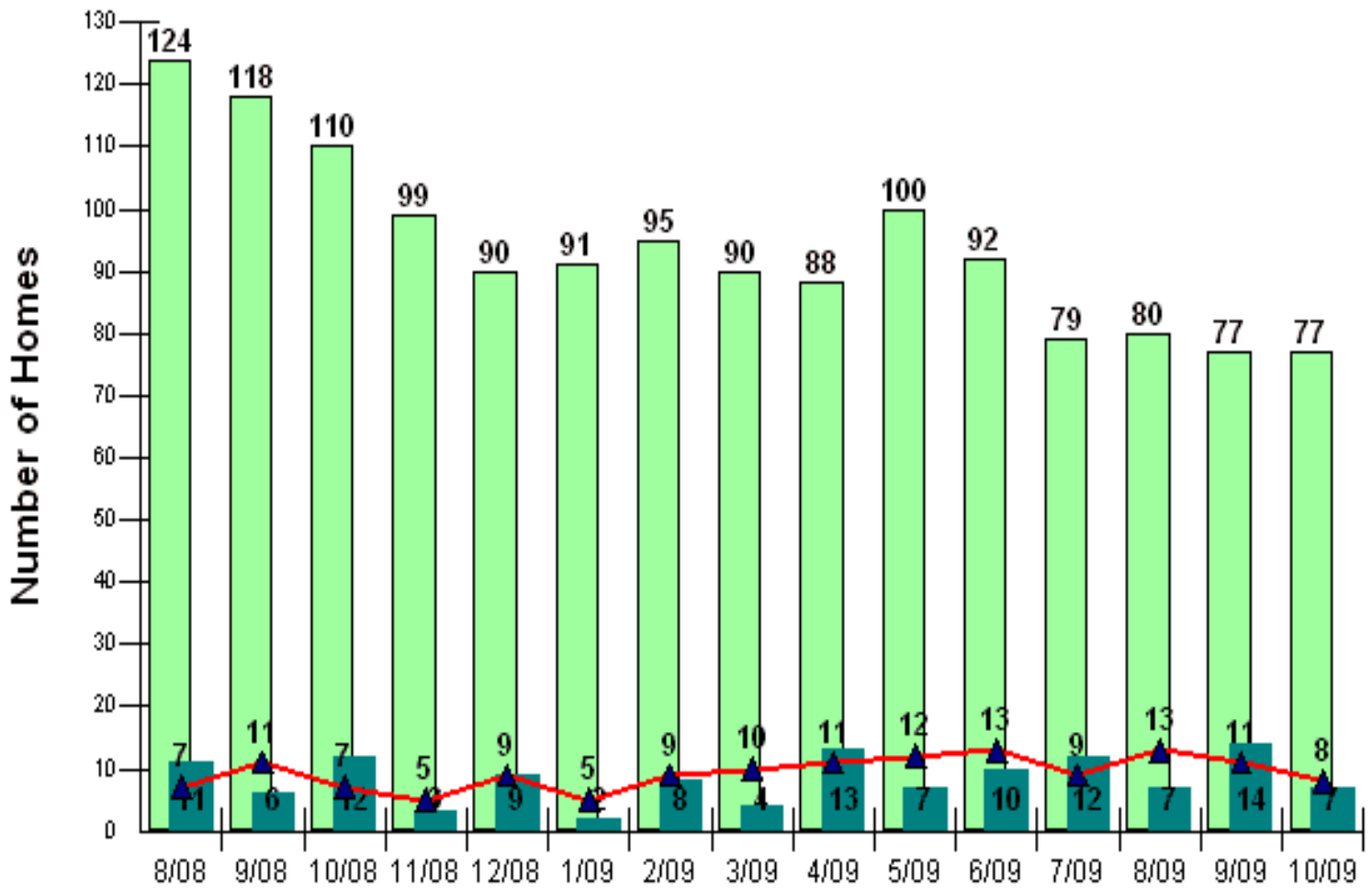
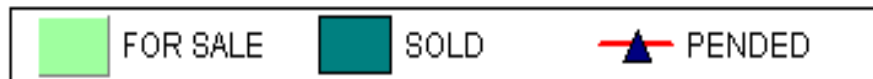
Number of Homes For Sale vs. Sold vs. Pended (Aug. 2008 - Oct. 2009)

Price Range: \$0 - No Limit

SQFT Range: 0 - No Limit

Single Family Homes - All Property Statuses - All Properties

Prepared for you by: Dave Jones, CRS
(360-692-6102, ext 264)



Copyright © Trendgraphix, Inc.

	1 month			1 year			15 months		
	Sep 09	Oct 09	% Change	Oct 08	Oct 09	% Change	Aug 08	Oct 09	% Change
For Sale	77	77	0%	110	77	-30% ↓	124	77	-37.9% ↓
Sold	14	7	-50% ↓	12	7	-41.7% ↓	11	7	-36.4% ↓
Pended	11	8	-27.3% ↓	7	8	14.3% ↑	7	8	14.3% ↑

This representation is based in whole or in part on data supplied by the NWMLS. Neither the Board or its MLS guarantees or is in any way responsible for its accuracy. Data maintained by the Board or its MLS may not reflect all real estate activity in the market. Report reflects activity by all brokers participated in the MLS.

Facts and TrendsTM



Published Nov. 2009

Location : Seabeck/Holly (145)

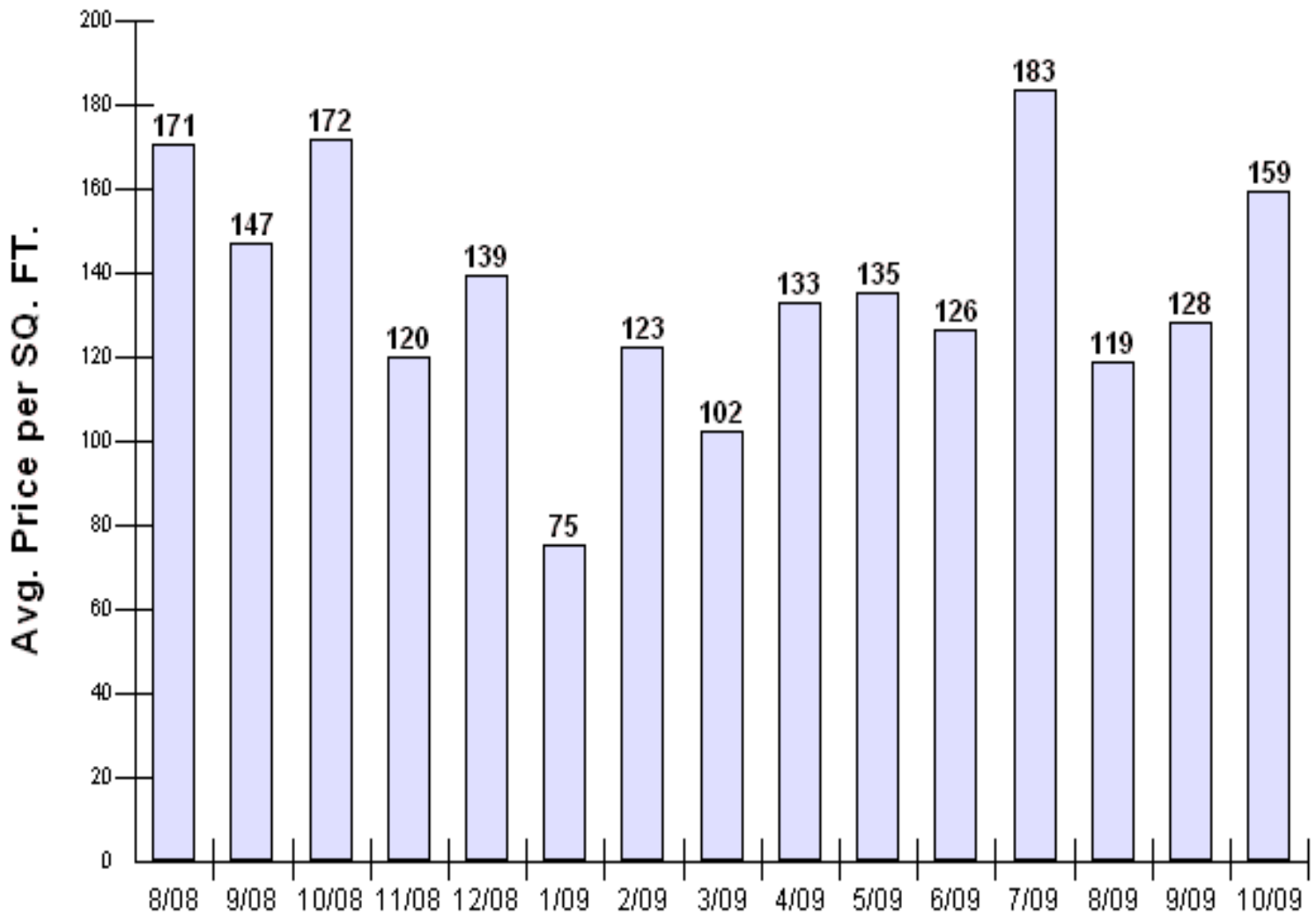
Average Home Sold Price per SQFT (Aug. 2008 - Oct. 2009)

Price Range: \$0 - No Limit

SQFT Range: 0 - No Limit

Single Family Homes - All Property Statuses - All Properties

**Prepared for you by: Dave Jones, CRS
(360-692-6102, ext 264)**



Copyright © Trendgraphix, Inc.

	1 month			1 year			15 months		
	Sep 09	Oct 09	% Change	Oct 08	Oct 09	% Change	Aug 08	Oct 09	% Change
Avg. Sq. Ft. Price	128	159	24.3% ↑	172	159	-7.3% ↓	171	159	-6.7% ↓

This representation is based in whole or in part on data supplied by the NWMLS. Neither the Board or its MLS guarantees or is in any way responsible for its accuracy. Data maintained by the Board or its MLS may not reflect all real estate activity in the market. Report reflects activity by all brokers participated in the MLS.

Facts and Trends™



Published Nov. 2009

Location : Seabeck/Holly (145)

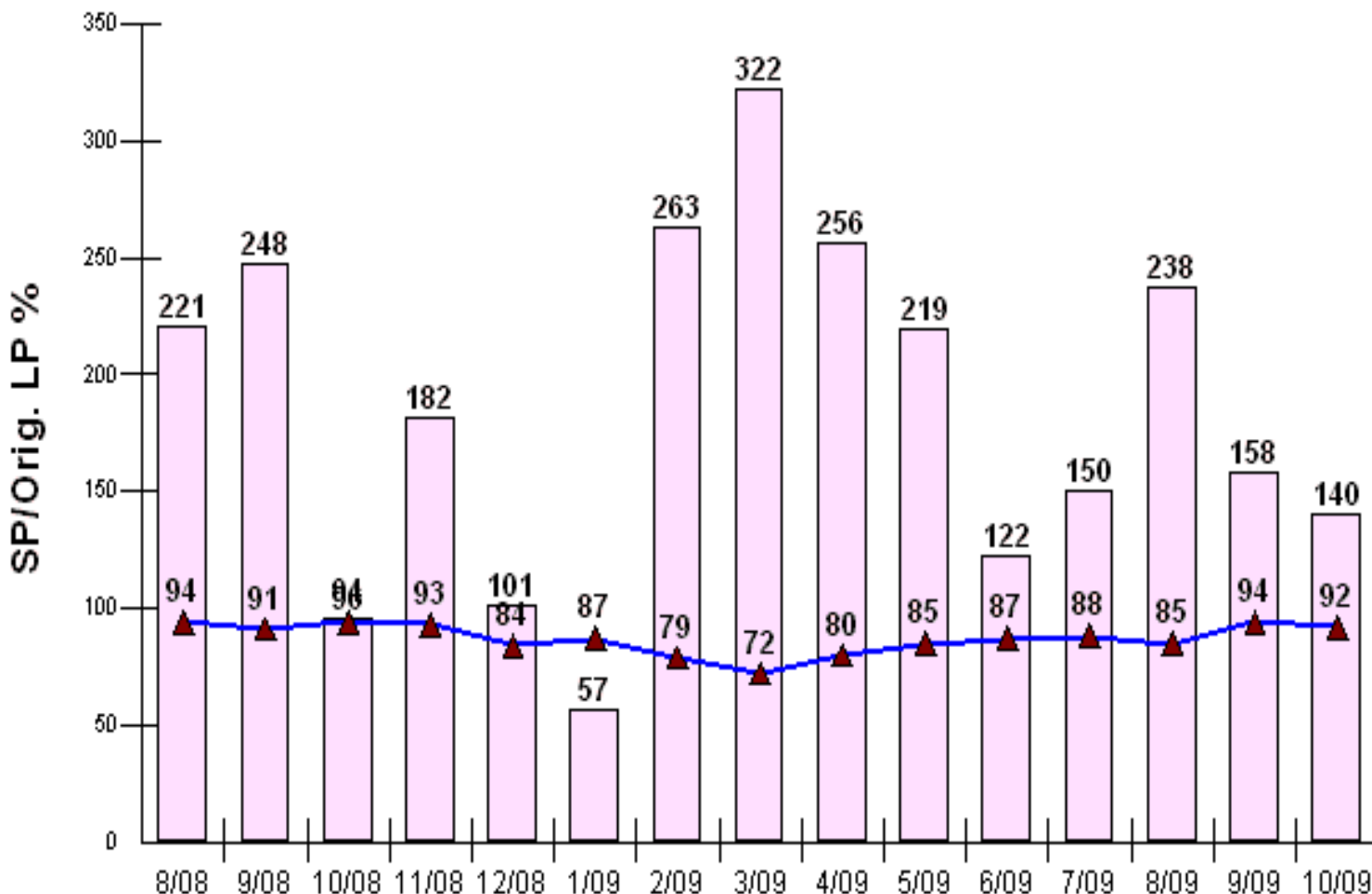
Avg CDOM & SP/Orig LP % (Aug. 2008 - Oct. 2009)

Price Range: \$0 - No Limit

SQFT Range: 0 - No Limit

Single Family Homes - All Property Statuses - All Properties

**Prepared for you by: Dave Jones, CRS
(360-692-6102, ext 264)**



	1 month			1 year			15 months		
	Sep 09	Oct 09	% Change	Oct 08	Oct 09	% Change	Aug 08	Oct 09	% Change
Avg. CDOM	158	140	-11.4% ↓	96	140	45.8% ↑	221	140	-36.7% ↓
Sold/Orig List Diff. %	94	92	-2.1% ↓	94	92	-2.1% ↓	94	92	-2.1% ↓

This representation is based in whole or in part on data supplied by the NWMLS. Neither the Board or its MLS guarantees or is in any way responsible for its accuracy. Data maintained by the Board or its MLS may not reflect all real estate activity in the market. Report reflects activity by all brokers participated in the MLS.

*Facts and Trends*TM



Published Nov. 2009

Location : Seabeck/Holly (145)

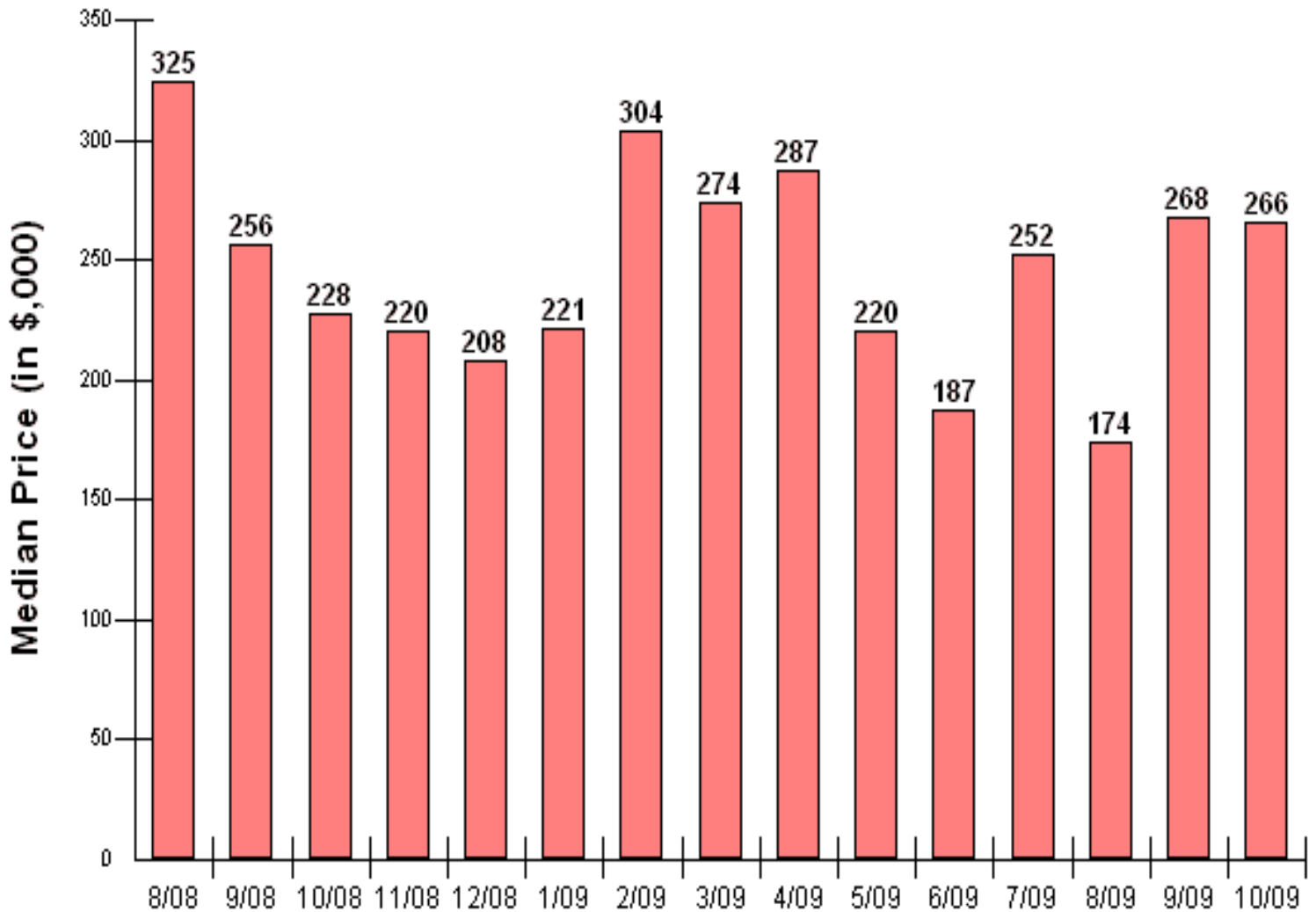
Median Price Sold (Aug. 2008 - Oct. 2009)

Price Range: \$0 - No Limit

SQFT Range: 0 - No Limit

Single Family Homes - All Property Statuses - All Properties

**Prepared for you by: Dave Jones, CRS
(360-692-6102, ext 264)**



Copyright © Trendgraphix, Inc.

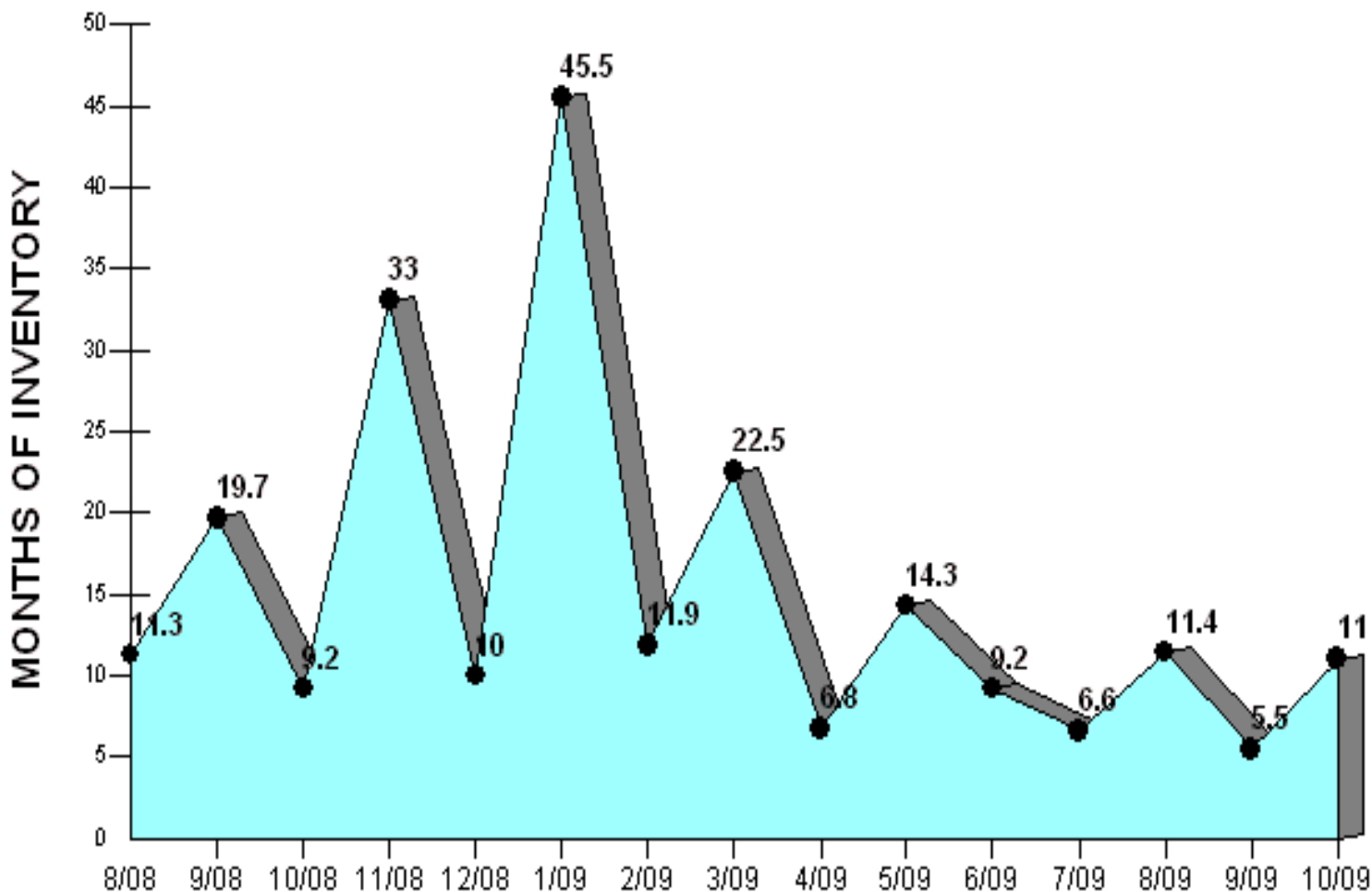
	1 month			1 year			15 months		
	Sep 09	Oct 09	% Change	Oct 08	Oct 09	% Change	Aug 08	Oct 09	% Change
Median Price	268	266	-0.7% ↓	228	266	16.7% ↑	325	266	-18.2% ↓

This representation is based in whole or in part on data supplied by the NWMLS. Neither the Board or its MLS guarantees or is in any way responsible for its accuracy. Data maintained by the Board or its MLS may not reflect all real estate activity in the market. Report reflects activity by all brokers participated in the MLS.

*Facts and Trends*TM

Published Nov. 2009

Location : Seabeck/Holly (145)**Months of Inventory based on Closed Sales (Aug. 2008 - Oct. 2009)****Price Range: \$0 - No Limit****SQFT Range: 0 - No Limit**



Copyright © Trendgraphix, Inc.

	1 month			1 year			15 months		
	Sep 09	Oct 09	% Change	Oct 08	Oct 09	% Change	Aug 08	Oct 09	% Change
Months of Inventory (Closed Sales)	5.5	11	100% ↑	9.2	11	19.6% ↑	11.3	11	-2.7% ↓

This representation is based in whole or in part on data supplied by the NWMLS. Neither the Board or its MLS guarantees or is in any way responsible for its accuracy. Data maintained by the Board or its MLS may not reflect all real estate activity in the market. Report reflects activity by all brokers participated in the MLS.