

*** Publisher's Note ***:

If your email program is not displaying the chart graphs properly, please click on the following link which will take you to a web page that contains the graphs:

[Show charts](#)

Facts and Trends™



Published Nov. 2009

Location : Silverdale (147)

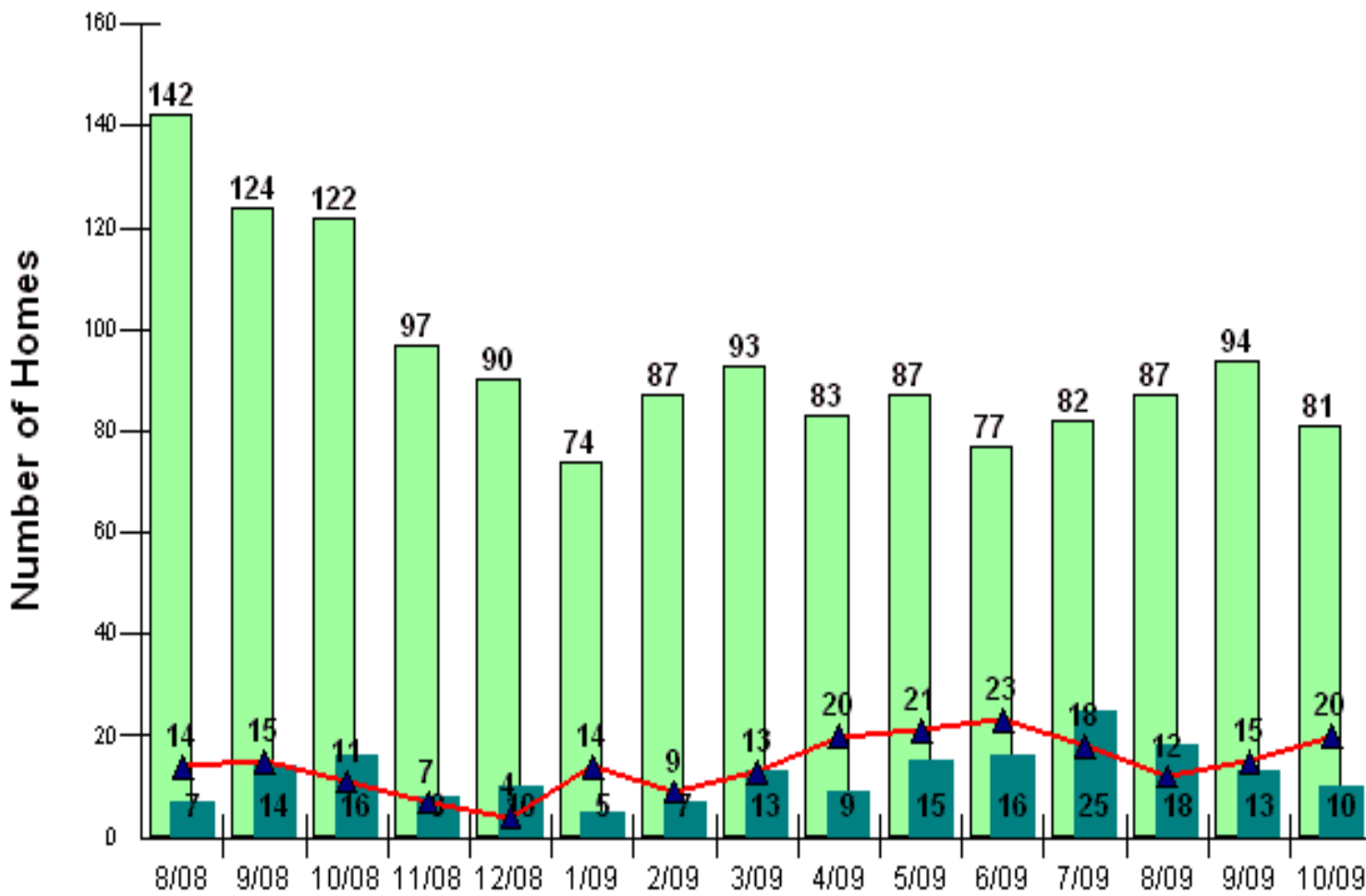
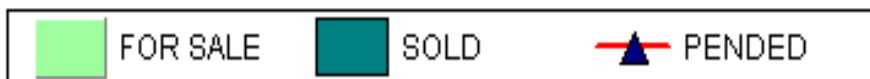
Number of Homes For Sale vs. Sold vs. Pended (Aug. 2008 - Oct. 2009)

Price Range: \$0 - No Limit

SQFT Range: 0 - No Limit

Single Family Homes - All Property Statuses - All Properties

Prepared for you by: Dave Jones, CRS
(360-692-6102, ext 264)



Copyright © Trendgraphix, Inc.

	1 month			1 year			15 months		
	Sep 09	Oct 09	% Change	Oct 08	Oct 09	% Change	Aug 08	Oct 09	% Change
For Sale	94	81	-13.8% ↓	122	81	-33.6% ↓	142	81	-43% ↓
Sold	13	10	-23.1% ↓	16	10	-37.5% ↓	7	10	42.9% ↑
Pended	15	20	33.3% ↑	11	20	81.8% ↑	14	20	42.9% ↑

This representation is based in whole or in part on data supplied by the NWMLS. Neither the Board or its MLS guarantees or is in any way responsible for its accuracy. Data maintained by the Board or its MLS may not reflect all real estate activity in the market. Report reflects activity by all brokers participated in the MLS.

Facts and TrendsTM



Published Nov. 2009

Location : Silverdale (147)

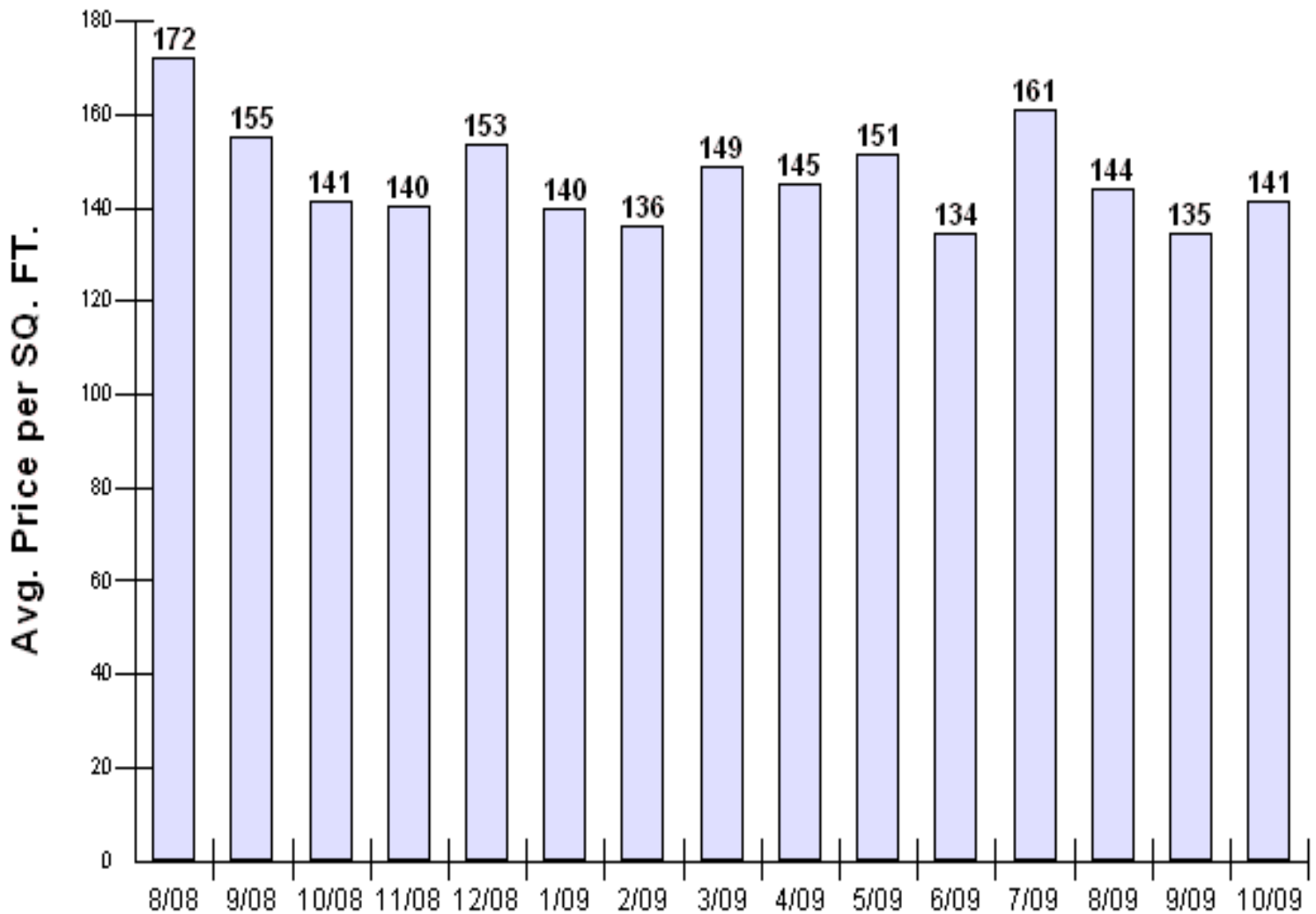
Average Home Sold Price per SQFT (Aug. 2008 - Oct. 2009)

Price Range: \$0 - No Limit

SQFT Range: 0 - No Limit

Single Family Homes - All Property Statuses - All Properties

**Prepared for you by: Dave Jones, CRS
(360-692-6102, ext 264)**



Copyright © Trendgraphix, Inc.

	1 month			1 year			15 months		
	Sep 09	Oct 09	% Change	Oct 08	Oct 09	% Change	Aug 08	Oct 09	% Change
Avg. Sq. Ft. Price	135	141	5% ↑	141	141	-0.1% ↓	172	141	-18% ↓

This representation is based in whole or in part on data supplied by the NWMLS. Neither the Board or its MLS guarantees or is in any way responsible for its accuracy. Data maintained by the Board or its MLS may not reflect all real estate activity in the market. Report reflects activity by all brokers participated in the MLS.

Facts and Trends™



Published Nov. 2009

Location : Silverdale (147)

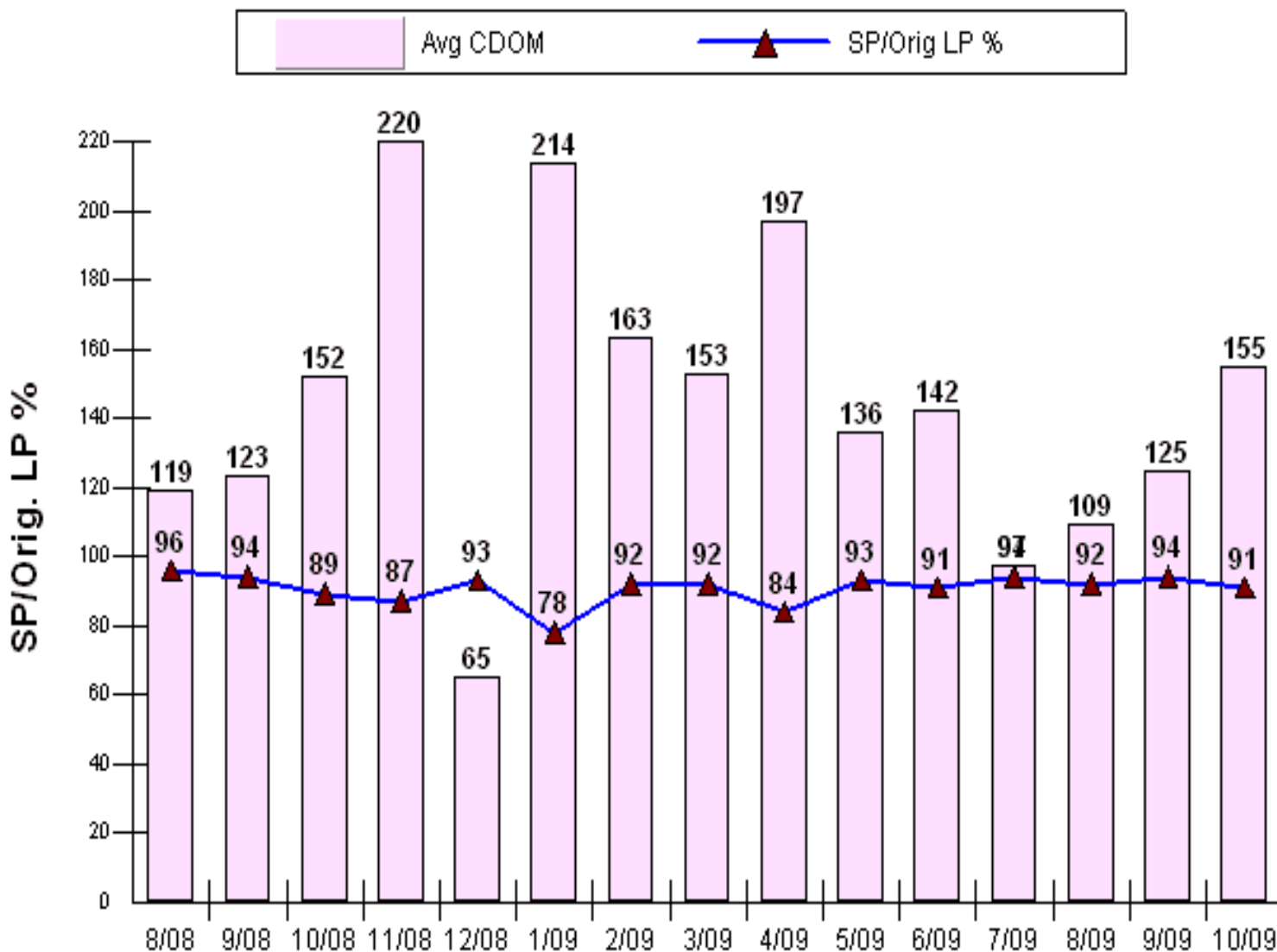
Avg CDOM & SP/Orig LP % (Aug. 2008 - Oct. 2009)

Price Range: \$0 - No Limit

SQFT Range: 0 - No Limit

Single Family Homes - All Property Statuses - All Properties

Prepared for you by: Dave Jones, CRS
(360-692-6102, ext 264)



	1 month			1 year			15 months		
	Sep 09	Oct 09	% Change	Oct 08	Oct 09	% Change	Aug 08	Oct 09	% Change
Avg. CDOM	125	155	24% ↑	152	155	2% ↑	119	155	30.3% ↑
Sold/Orig List Diff. %	94	91	-3.2% ↓	89	91	2.2% ↑	96	91	-5.2% ↓

This representation is based in whole or in part on data supplied by the NWMLS. Neither the Board or its MLS guarantees or is in any way responsible for its accuracy. Data maintained by the Board or its MLS may not reflect all real estate activity in the market. Report reflects activity by all brokers participated in the MLS.

*Facts and Trends*TM



Published Nov. 2009

Location : Silverdale (147)

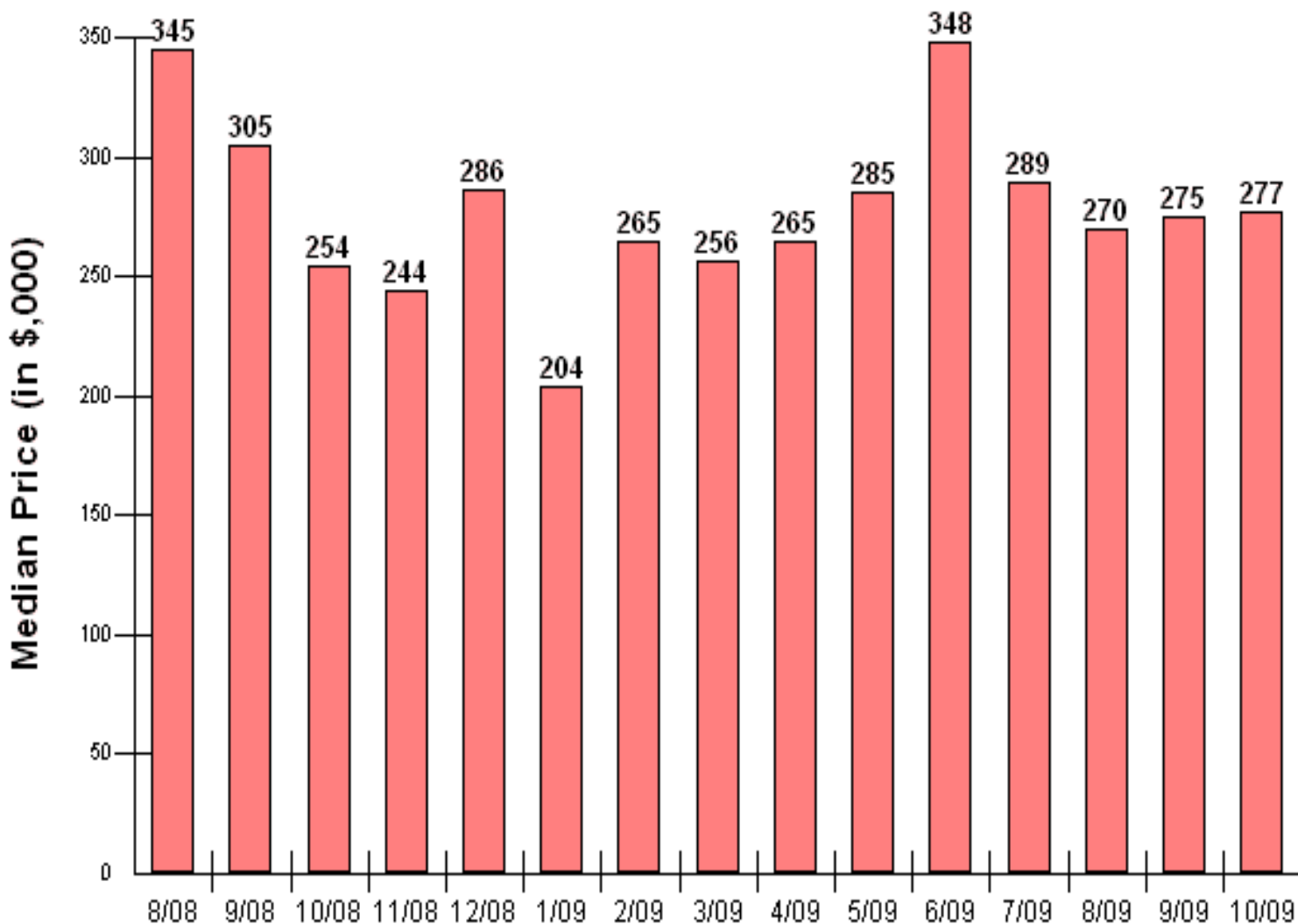
Median Price Sold (Aug. 2008 - Oct. 2009)

Price Range: \$0 - No Limit

SQFT Range: 0 - No Limit

Single Family Homes - All Property Statuses - All Properties

**Prepared for you by: Dave Jones, CRS
(360-692-6102, ext 264)**



Copyright © Trendgraphix, Inc.

	1 month			1 year			15 months		
	Sep 09	Oct 09	% Change	Oct 08	Oct 09	% Change	Aug 08	Oct 09	% Change
Median Price	275	277	0.7% ↑	254	277	9.1% ↑	345	277	-19.7% ↓

This representation is based in whole or in part on data supplied by the NWMLS. Neither the Board or its MLS guarantees or is in any way responsible for its accuracy. Data maintained by the Board or its MLS may not reflect all real estate activity in the market. Report reflects activity by all brokers participated in the MLS.

Facts and Trends™



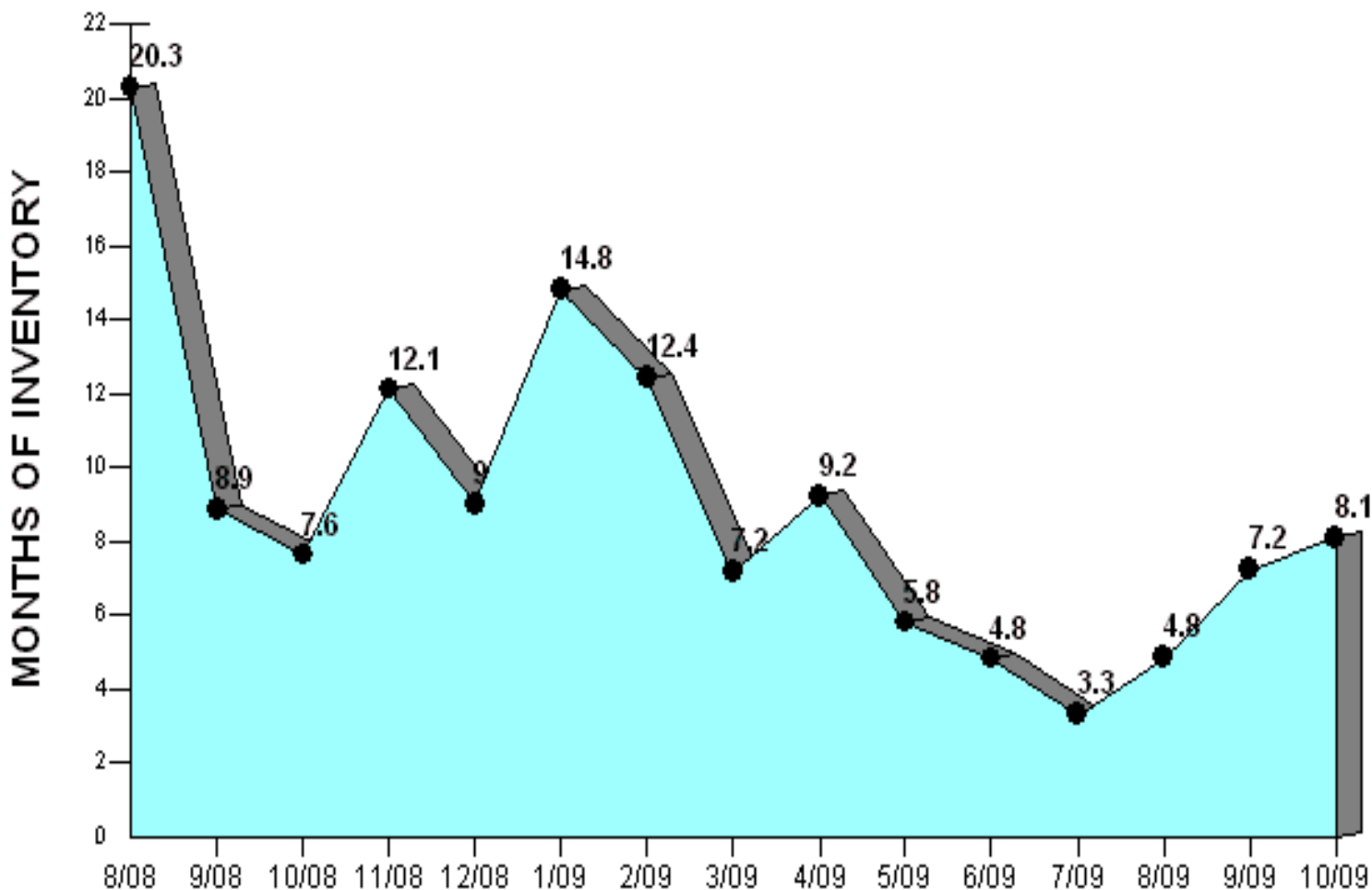
Published Nov. 2009

Location : Silverdale (147)

Months of Inventory based on Closed Sales (Aug. 2008 - Oct. 2009)

Price Range: \$0 - No Limit

SQFT Range: 0 - No Limit



Copyright © Trendgraphix, Inc.

	1 month			1 year			15 months		
	Sep 09	Oct 09	% Change	Oct 08	Oct 09	% Change	Aug 08	Oct 09	% Change
Months of Inventory (Closed Sales)	7.2	8.1	12.5% ↑	7.6	8.1	6.6% ↑	20.3	8.1	-60.1% ↓

This representation is based in whole or in part on data supplied by the NWMLS. Neither the Board or its MLS guarantees or is in any way responsible for its accuracy. Data maintained by the Board or its MLS may not reflect all real estate activity in the market. Report reflects activity by all brokers participated in the MLS.