

\*\*\* Publisher's Note \*\*\*:

If your email program is not displaying the chart graphs properly, please click on the following link which will take you to a web page that contains the graphs:

[Show charts](#)

# Facts and Trends™



Published Nov. 2009

**Location : Finn Hill (165) , Poulsbo (166)**

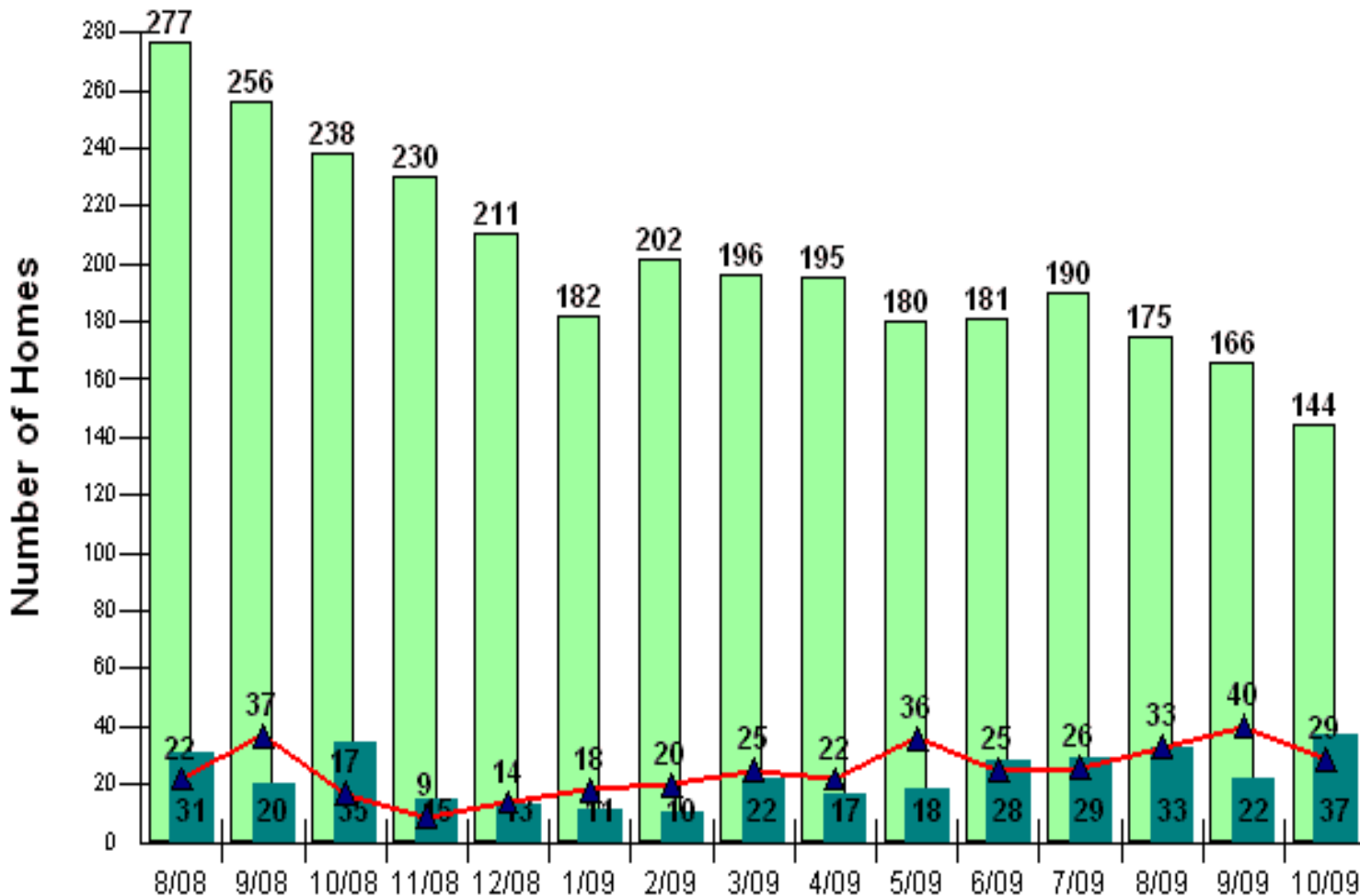
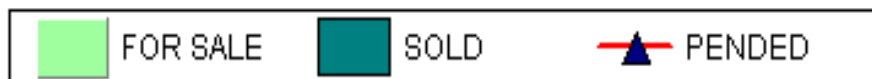
**Number of Homes For Sale vs. Sold vs. Pending (Aug. 2008 - Oct. 2009)**

**Price Range: \$0 - No Limit**

**SQFT Range: 0 - No Limit**

**Single Family Homes - All Property Statuses - All Properties**

Prepared for you by: Dave Jones, CRS  
(360-692-6102, ext 264)



Copyright © Trendgraphix, Inc.

	1 month			1 year			15 months		
	Sep 09	Oct 09	% Change	Oct 08	Oct 09	% Change	Aug 08	Oct 09	% Change
For Sale	166	144	-13.3% ↓	238	144	-39.5% ↓	277	144	-48% ↓
Sold	22	37	68.2% ↑	35	37	5.7% ↑	31	37	19.4% ↑
Pended	40	29	-27.5% ↓	17	29	70.6% ↑	22	29	31.8% ↑

This representation is based in whole or in part on data supplied by the NWMLS. Neither the Board or its MLS guarantees or is in any way responsible for its accuracy. Data maintained by the Board or its MLS may not reflect all real estate activity in the market. Report reflects activity by all brokers participated in the MLS.

## Facts and Trends<sup>TM</sup>



Published Nov. 2009

**Location : Finn Hill (165) , Poulsbo (166)**

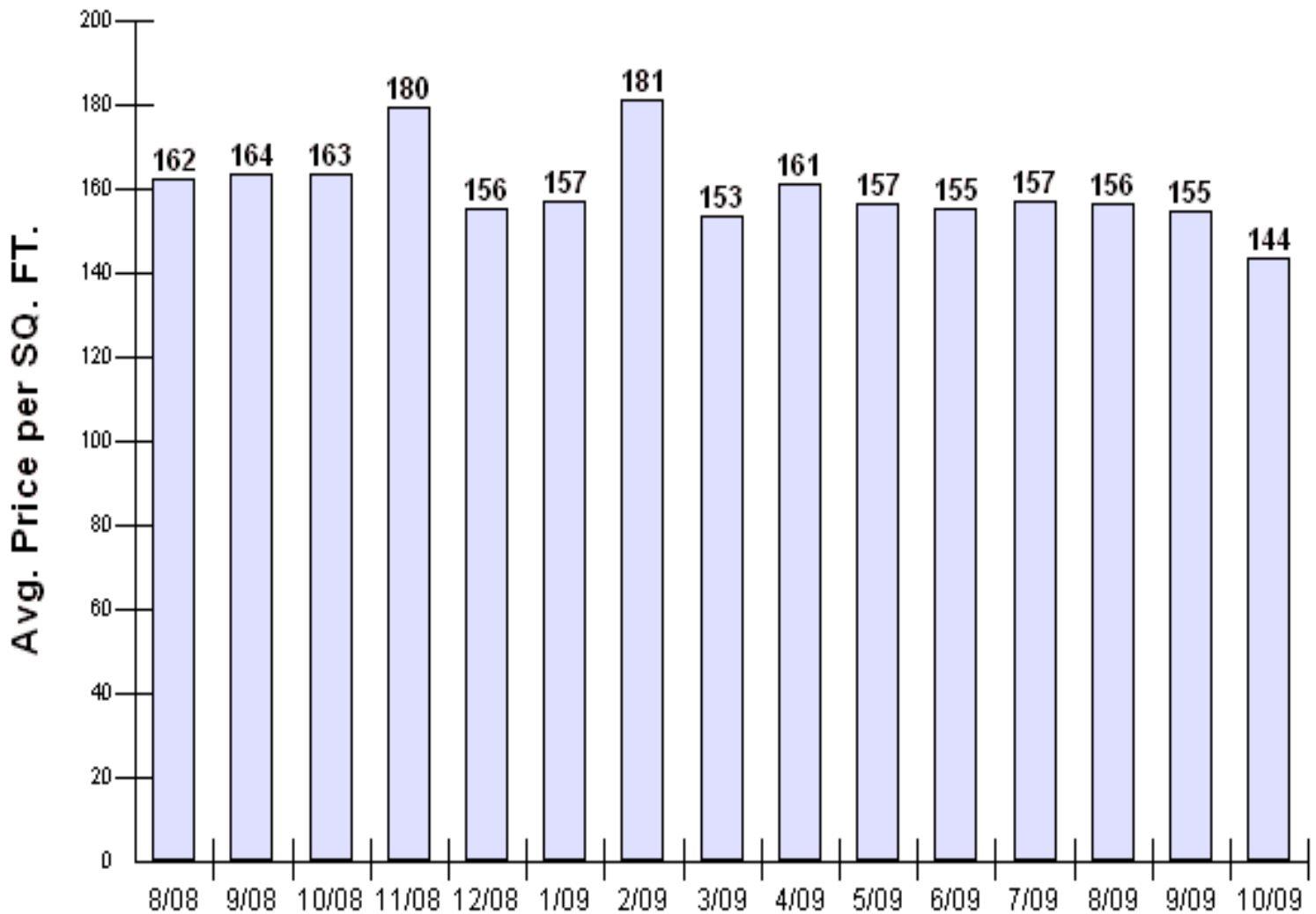
**Average Home Sold Price per SQFT (Aug. 2008 - Oct. 2009)**

**Price Range: \$0 - No Limit**

**SQFT Range: 0 - No Limit**

**Single Family Homes - All Property Statuses - All Properties**

**Prepared for you by: Dave Jones, CRS  
(360-692-6102, ext 264)**



Copyright © Trendgraphix, Inc.

	1 month			1 year			15 months		
	Sep 09	Oct 09	% Change	Oct 08	Oct 09	% Change	Aug 08	Oct 09	% Change
Avg. Sq. Ft. Price	155	144	-7.3% ↓	163	144	-12.2% ↓	162	144	-11.5% ↓

This representation is based in whole or in part on data supplied by the NWMLS. Neither the Board or its MLS guarantees or is in any way responsible for its accuracy. Data maintained by the Board or its MLS may not reflect all real estate activity in the market. Report reflects activity by all brokers participated in the MLS.

# Facts and Trends™



Published Nov. 2009

**Location : Finn Hill (165) , Poulsbo (166)**

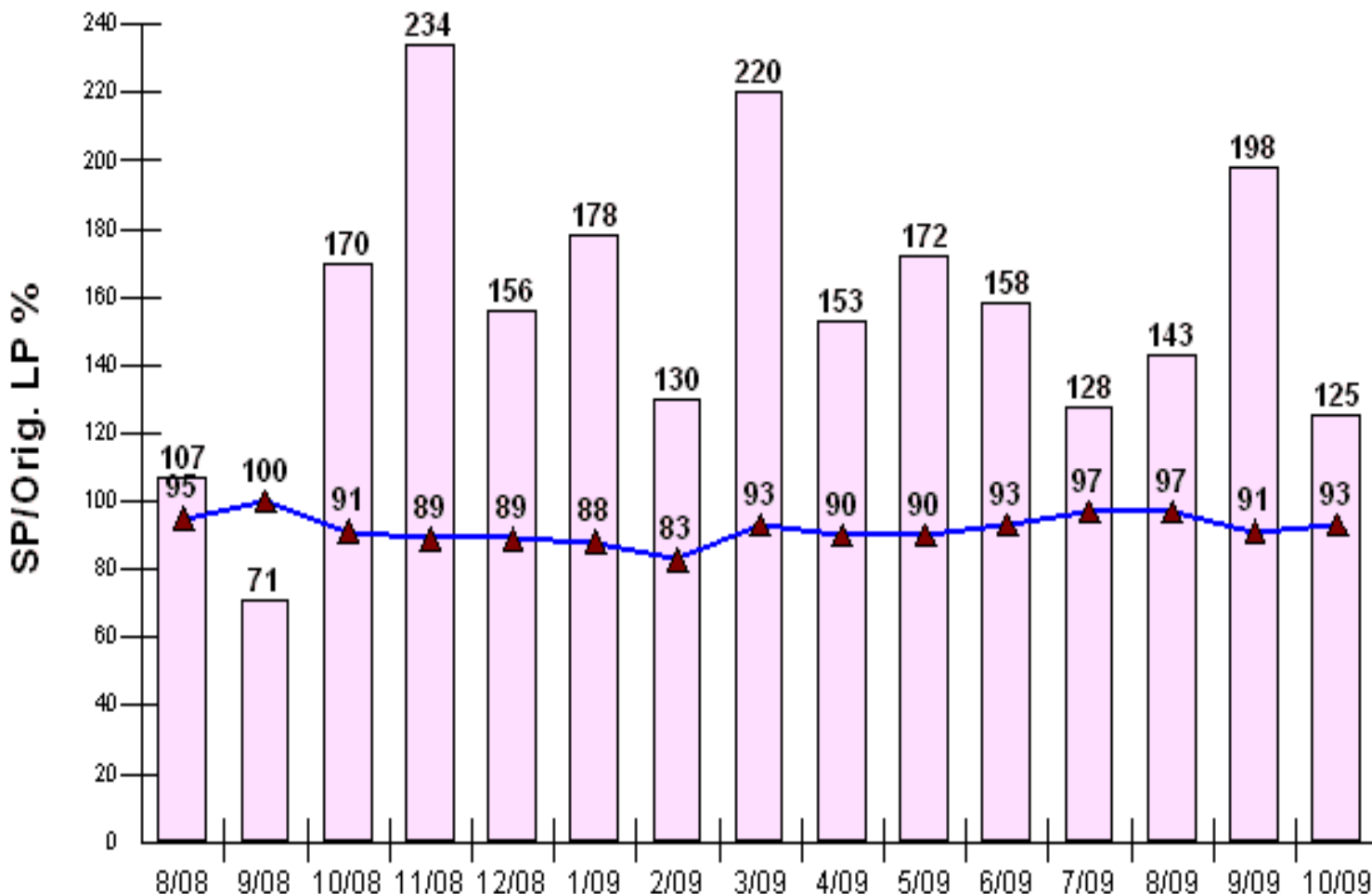
**Avg CDOM & SP/Orig LP % (Aug. 2008 - Oct. 2009)**

**Price Range: \$0 - No Limit**

**SQFT Range: 0 - No Limit**

**Single Family Homes - All Property Statuses - All Properties**

**Prepared for you by: Dave Jones, CRS  
(360-692-6102, ext 264)**



	1 month			1 year			15 months		
	Sep 09	Oct 09	% Change	Oct 08	Oct 09	% Change	Aug 08	Oct 09	% Change
Avg. CDOM	198	125	-36.9% ↓	170	125	-26.5% ↓	107	125	16.8% ↑
Sold/Orig List Diff. %	91	93	2.2% ↑	91	93	2.2% ↑	95	93	-2.1% ↓

This representation is based in whole or in part on data supplied by the NWMLS. Neither the Board or its MLS guarantees or is in any way responsible for its accuracy. Data maintained by the Board or its MLS may not reflect all real estate activity in the market. Report reflects activity by all brokers participated in the MLS.

## *Facts and Trends*<sup>TM</sup>



Published Nov. 2009

**Location : Finn Hill (165) , Poulsbo (166)**

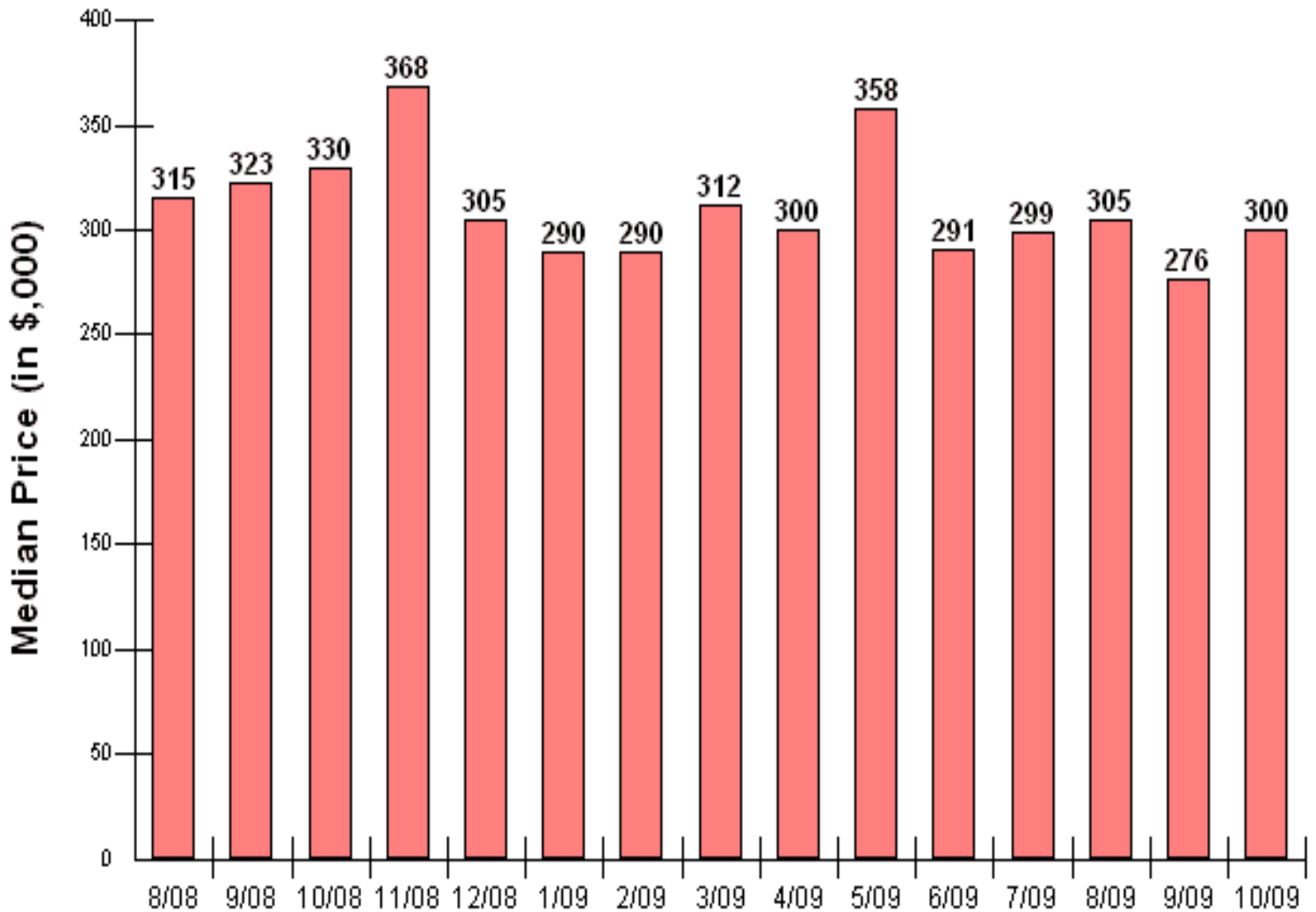
**Median Price Sold (Aug. 2008 - Oct. 2009)**

**Price Range: \$0 - No Limit**

**SQFT Range: 0 - No Limit**

**Single Family Homes - All Property Statuses - All Properties**

**Prepared for you by: Dave Jones, CRS  
(360-692-6102, ext 264)**



Copyright © Trendgraphix, Inc.

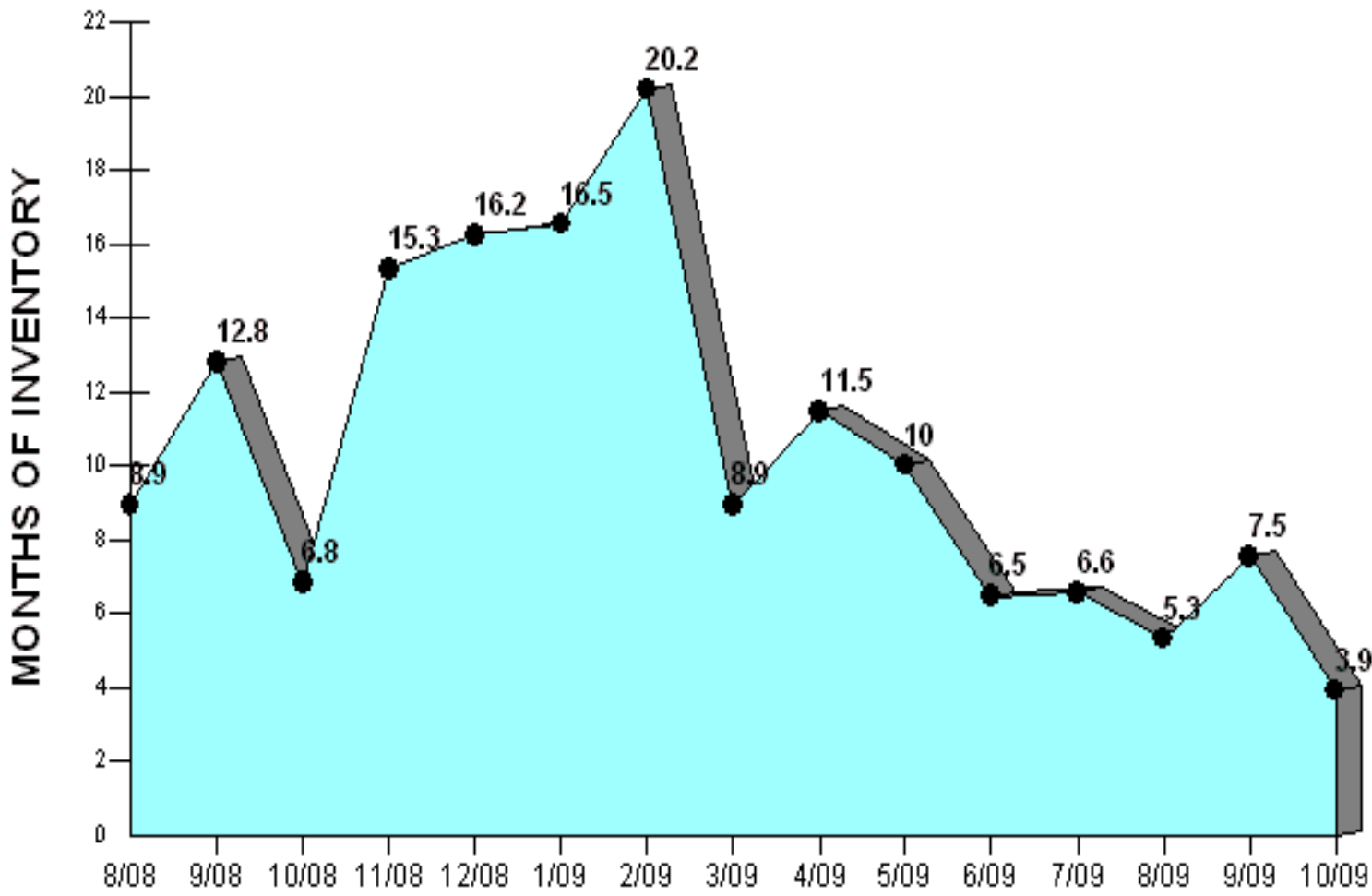
	1 month			1 year			15 months		
	Sep 09	Oct 09	% Change	Oct 08	Oct 09	% Change	Aug 08	Oct 09	% Change
Median Price	276	300	8.7% ↑	330	300	-9.1% ↓	315	300	-4.8% ↓

This representation is based in whole or in part on data supplied by the NWMLS. Neither the Board or its MLS guarantees or is in any way responsible for its accuracy. Data maintained by the Board or its MLS may not reflect all real estate activity in the market. Report reflects activity by all brokers participated in the MLS.

## *Facts and Trends*<sup>TM</sup>

Published Nov. 2009

**Location : Finn Hill (165) , Poulsbo (166)****Months of Inventory based on Closed Sales (Aug. 2008 - Oct. 2009)****Price Range: \$0 - No Limit****SQFT Range: 0 - No Limit**



Copyright © Trendgraphix, Inc.

	1 month			1 year			15 months		
	Sep 09	Oct 09	% Change	Oct 08	Oct 09	% Change	Aug 08	Oct 09	% Change
Months of Inventory (Closed Sales)	7.5	3.9	-48% ↓	6.8	3.9	-42.6% ↓	8.9	3.9	-56.2% ↓

This representation is based in whole or in part on data supplied by the NWMLS. Neither the Board or its MLS guarantees or is in any way responsible for its accuracy. Data maintained by the Board or its MLS may not reflect all real estate activity in the market. Report reflects activity by all brokers participated in the MLS.