

\*\*\* Publisher's Note \*\*\*:

If your email program is not displaying the chart graphs properly, please click on the following link which will take you to a web page that contains the graphs:

[Show charts](#)

# Facts and Trends™



Published Nov. 2009

**Location : KITSAP COUNTY**

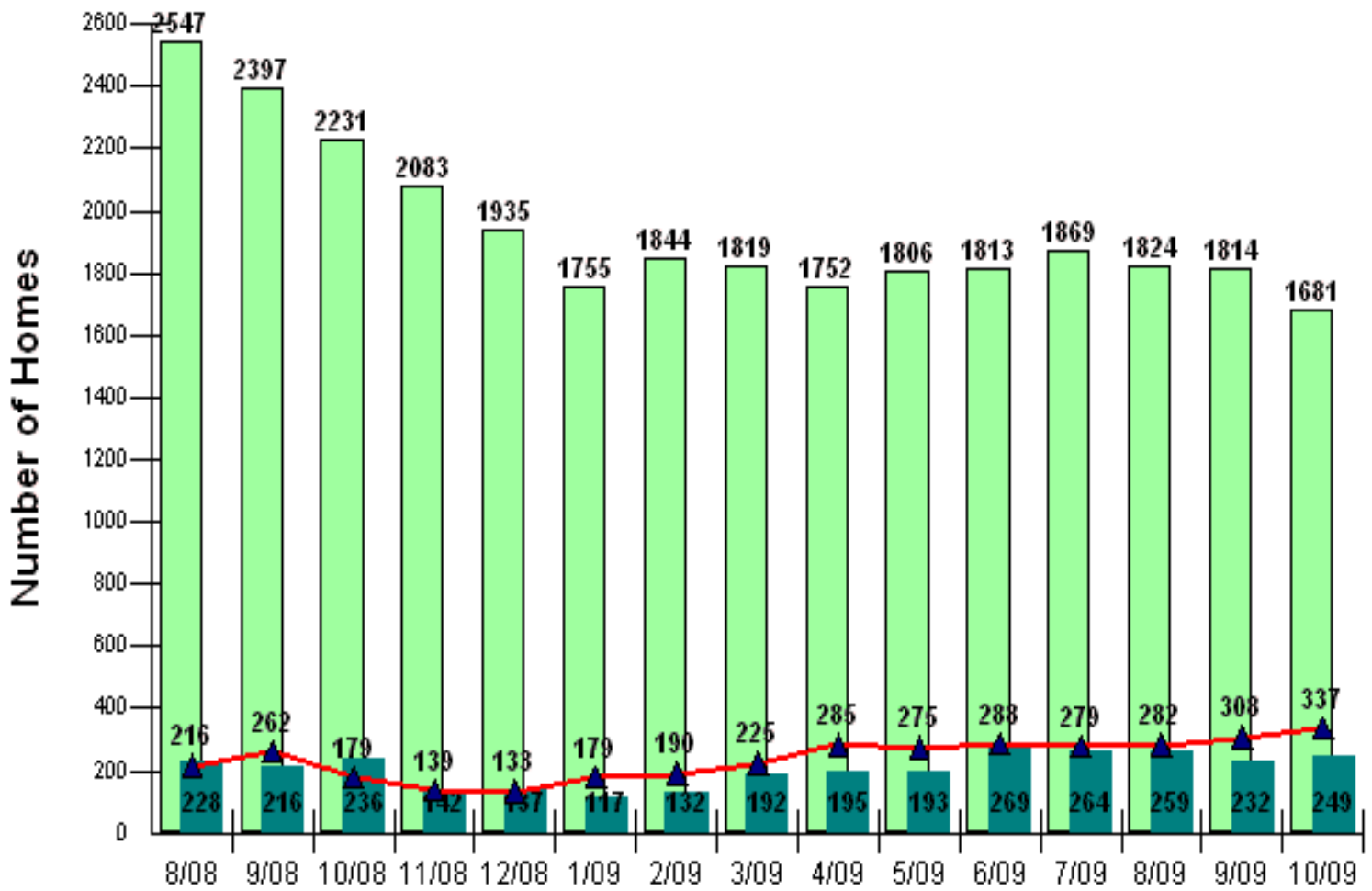
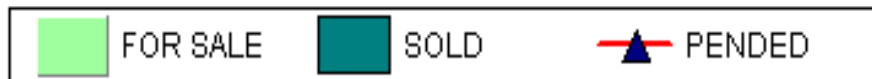
**Number of Homes For Sale vs. Sold vs. Pending (Aug. 2008 - Oct. 2009)**

**Price Range: \$0 - No Limit**

**SQFT Range: 0 - No Limit**

**Single Family Homes - All Property Statuses - All Properties**

Prepared for you by: Dave Jones, CRS  
(360-692-6102, ext 264)



Copyright © Trendgraphix, Inc.

	1 month			1 year			15 months		
	Sep 09	Oct 09	% Change	Oct 08	Oct 09	% Change	Aug 08	Oct 09	% Change
For Sale	1814	1681	-7.3% ↓	2231	1681	-24.7% ↓	2547	1681	-34% ↓
Sold	232	249	7.3% ↑	236	249	5.5% ↑	228	249	9.2% ↑
Pended	308	337	9.4% ↑	179	337	88.3% ↑	216	337	56% ↑

This representation is based in whole or in part on data supplied by the NWMLS. Neither the Board or its MLS guarantees or is in any way responsible for its accuracy. Data maintained by the Board or its MLS may not reflect all real estate activity in the market. Report reflects activity by all brokers participated in the MLS.

# Facts and Trends<sup>TM</sup>



Published Nov. 2009

**Location : KITSAP COUNTY**

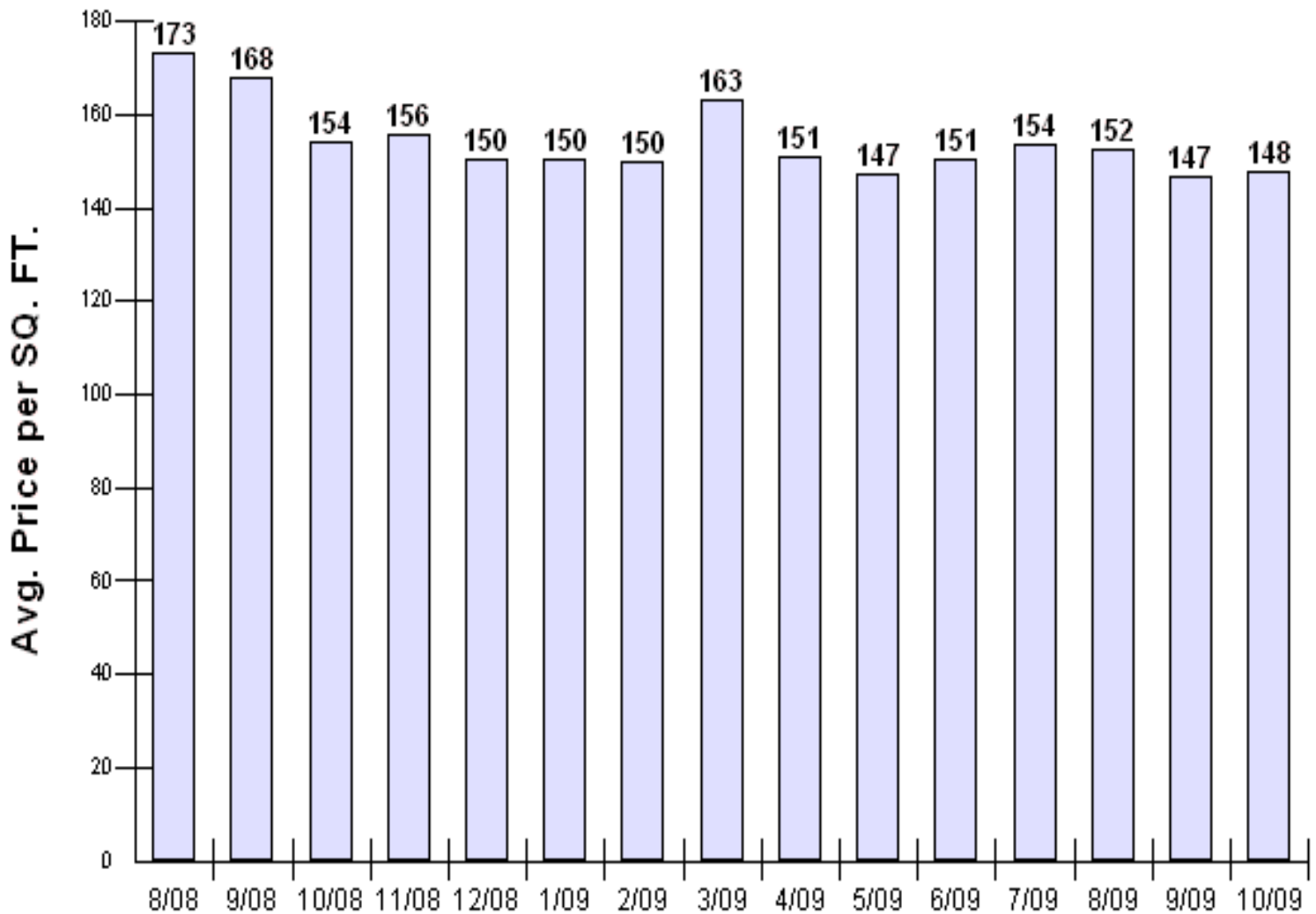
**Average Home Sold Price per SQFT (Aug. 2008 - Oct. 2009)**

**Price Range: \$0 - No Limit**

**SQFT Range: 0 - No Limit**

**Single Family Homes - All Property Statuses - All Properties**

**Prepared for you by: Dave Jones, CRS  
(360-692-6102, ext 264)**



Copyright © Trendgraphix, Inc.

	1 month			1 year			15 months		
	Sep 09	Oct 09	% Change	Oct 08	Oct 09	% Change	Aug 08	Oct 09	% Change
Avg. Sq. Ft. Price	147	148	0.8% ↑	154	148	-4.3% ↓	173	148	-14.8% ↓

This representation is based in whole or in part on data supplied by the NWMLS. Neither the Board or its MLS guarantees or is in any way responsible for its accuracy. Data maintained by the Board or its MLS may not reflect all real estate activity in the market. Report reflects activity by all brokers participated in the MLS.

# Facts and Trends™



Published Nov. 2009

**Location : KITSAP COUNTY**

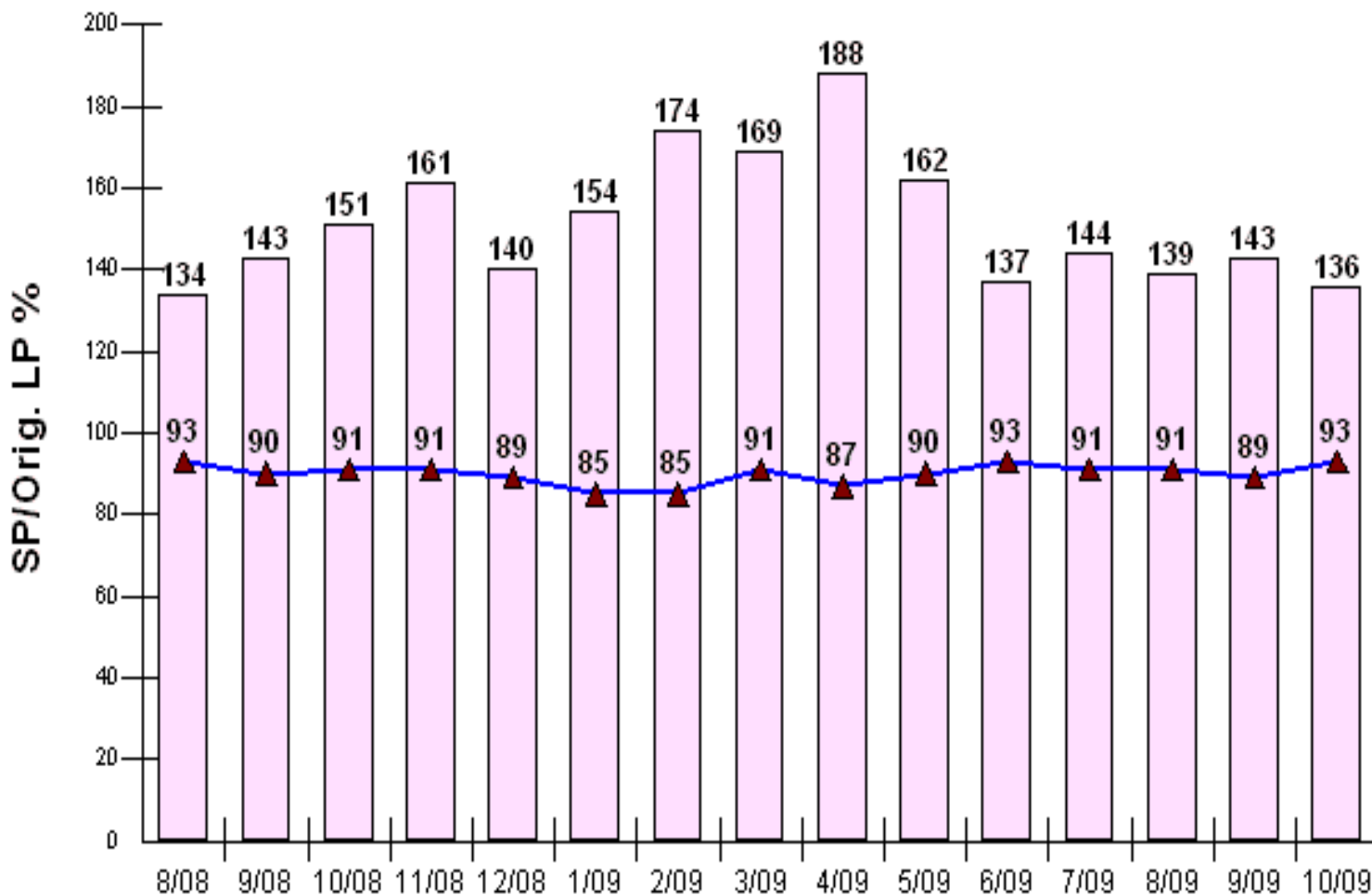
**Avg CDOM & SP/Orig LP % (Aug. 2008 - Oct. 2009)**

**Price Range: \$0 - No Limit**

**SQFT Range: 0 - No Limit**

**Single Family Homes - All Property Statuses - All Properties**

Prepared for you by: Dave Jones, CRS  
(360-692-6102, ext 264)



	1 month			1 year			15 months		
	Sep 09	Oct 09	% Change	Oct 08	Oct 09	% Change	Aug 08	Oct 09	% Change
Avg. CDOM	143	136	-4.9% ↓	151	136	-9.9% ↓	134	136	1.5% ↑
Sold/Orig List Diff. %	89	93	4.5% ↑	91	93	2.2% ↑	93	93	0%

This representation is based in whole or in part on data supplied by the NWMLS. Neither the Board or its MLS guarantees or is in any way responsible for its accuracy. Data maintained by the Board or its MLS may not reflect all real estate activity in the market. Report reflects activity by all brokers participated in the MLS.

## *Facts and Trends*<sup>TM</sup>



Published Nov. 2009

**Location : KITSAP COUNTY**

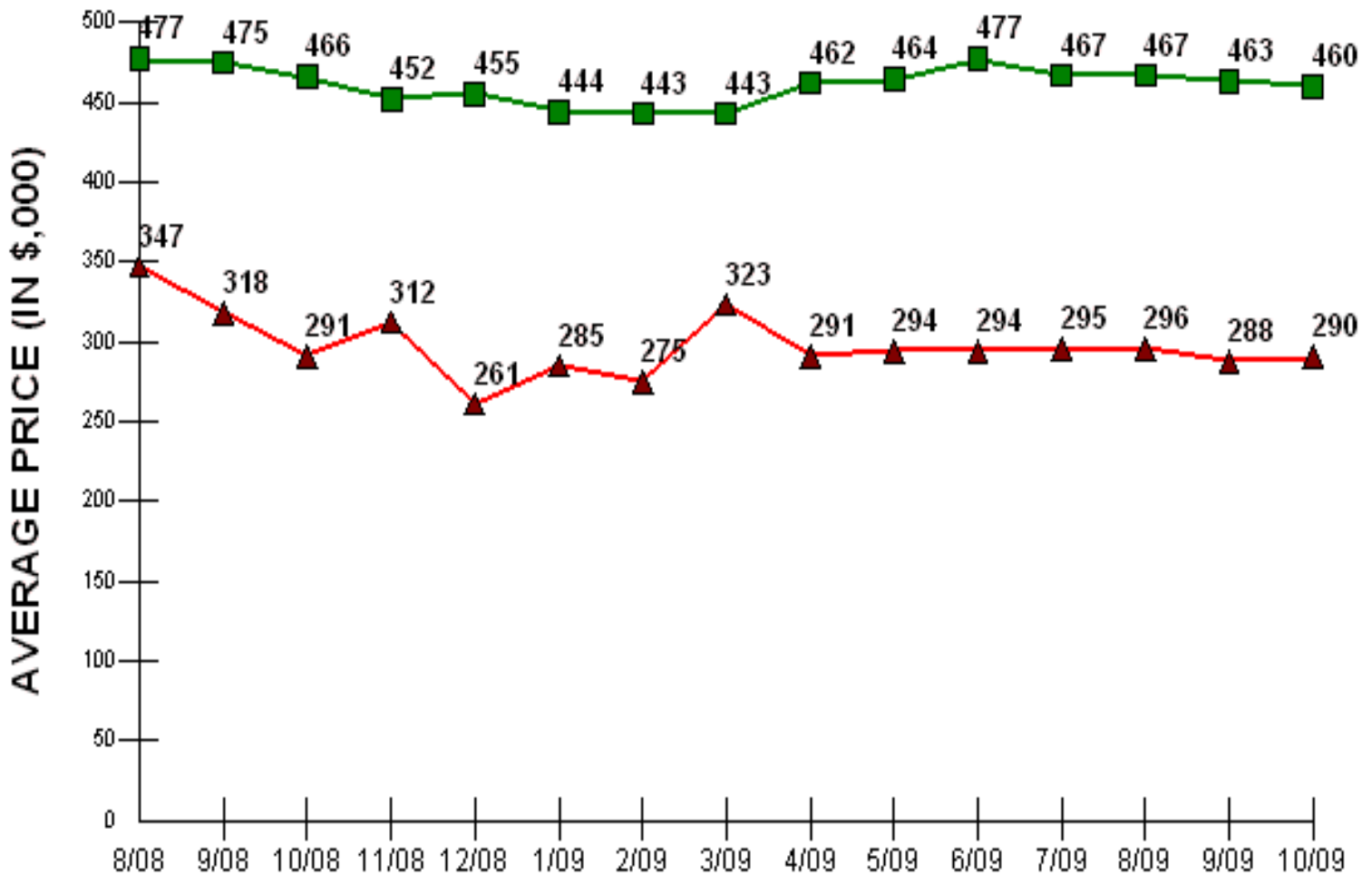
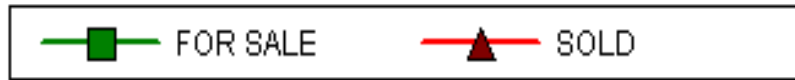
**Median Price Sold (Aug. 2008 - Oct. 2009)**

**Price Range: \$0 - No Limit**

**SQFT Range: 0 - No Limit**

**Single Family Homes - All Property Statuses - All Properties**

**Prepared for you by: Dave Jones, CRS  
(360-692-6102, ext 264)**



Copyright © Trendgraphix, Inc.

	1 month			1 year			15 months		
	Sep 09	Oct 09	% Change	Oct 08	Oct 09	% Change	Aug 08	Oct 09	% Change
Avg. Active Price	463	460	-0.6% ↓	466	460	-1.3% ↓	477	460	-3.6% ↓
Avg. Sold Price	288	290	0.7% ↑	291	290	-0.3% ↓	347	290	-16.4% ↓

This representation is based in whole or in part on data supplied by the NWMLS. Neither the Board or its MLS guarantees or is in any way responsible for its accuracy. Data maintained by the Board or its MLS may not reflect all real estate activity in the market. Report reflects activity by all brokers participated in the MLS.

# Facts and Trends™



Published Nov. 2009

**Location : KITSAP COUNTY**

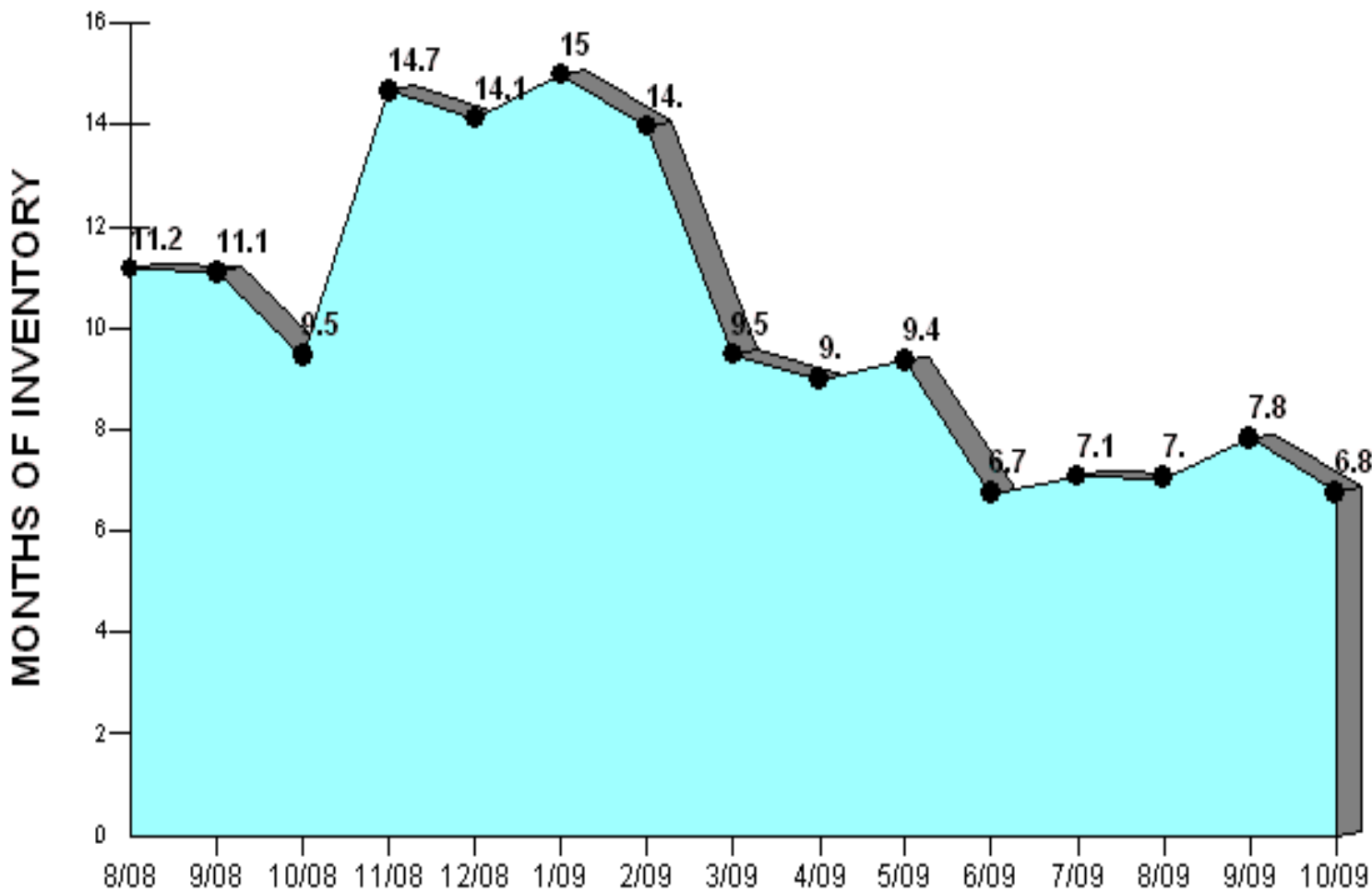
**Months of Inventory based on Closed Sales (Aug. 2008 - Oct. 2009)**

Price Range: \$0 - No Limit

SQFT Range: 0 - No Limit

Single Family Homes - All Property Statuses - All Properties

Prepared for you by: Dave Jones, CRS  
(360-692-6102, ext 264)



Copyright © Trendgraphix, Inc.

	1 month			1 year			15 months		
	Sep 09	Oct 09	% Change	Oct 08	Oct 09	% Change	Aug 08	Oct 09	% Change
Months of Inventory (Closed Sales)	7.8	6.8	-12.8% ↓	9.5	6.8	-28.4% ↓	11.2	6.8	-39.3% ↓

This representation is based in whole or in part on data supplied by the NWMLS. Neither the Board or its MLS guarantees or is in any way responsible for its accuracy. Data maintained by the Board or its MLS may not reflect all real estate activity in the market. Report reflects activity by all brokers participated in the MLS.